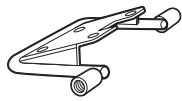


SHAD

YAMAHA FZ8 '10 '11 KIT TOP YOFZ84ST



1 261721 x 1



2 303020 x 8
Ø8



3 304053 x8
M8 x 30 Din 7380



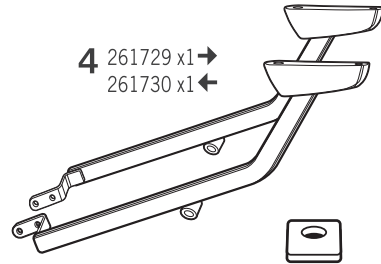
5 303025 x 2
Ø10



6 304181 x2
M10x45 din 7380



7 301081 x4
M8 x 20 Din 7380



4 261729 x1 →
261730 x1 ←



8 303018 x4
Ø8

! WARNING!

GB Do not fully tighten the screws until it is ensured that the KIT is correctly attached and aligned.

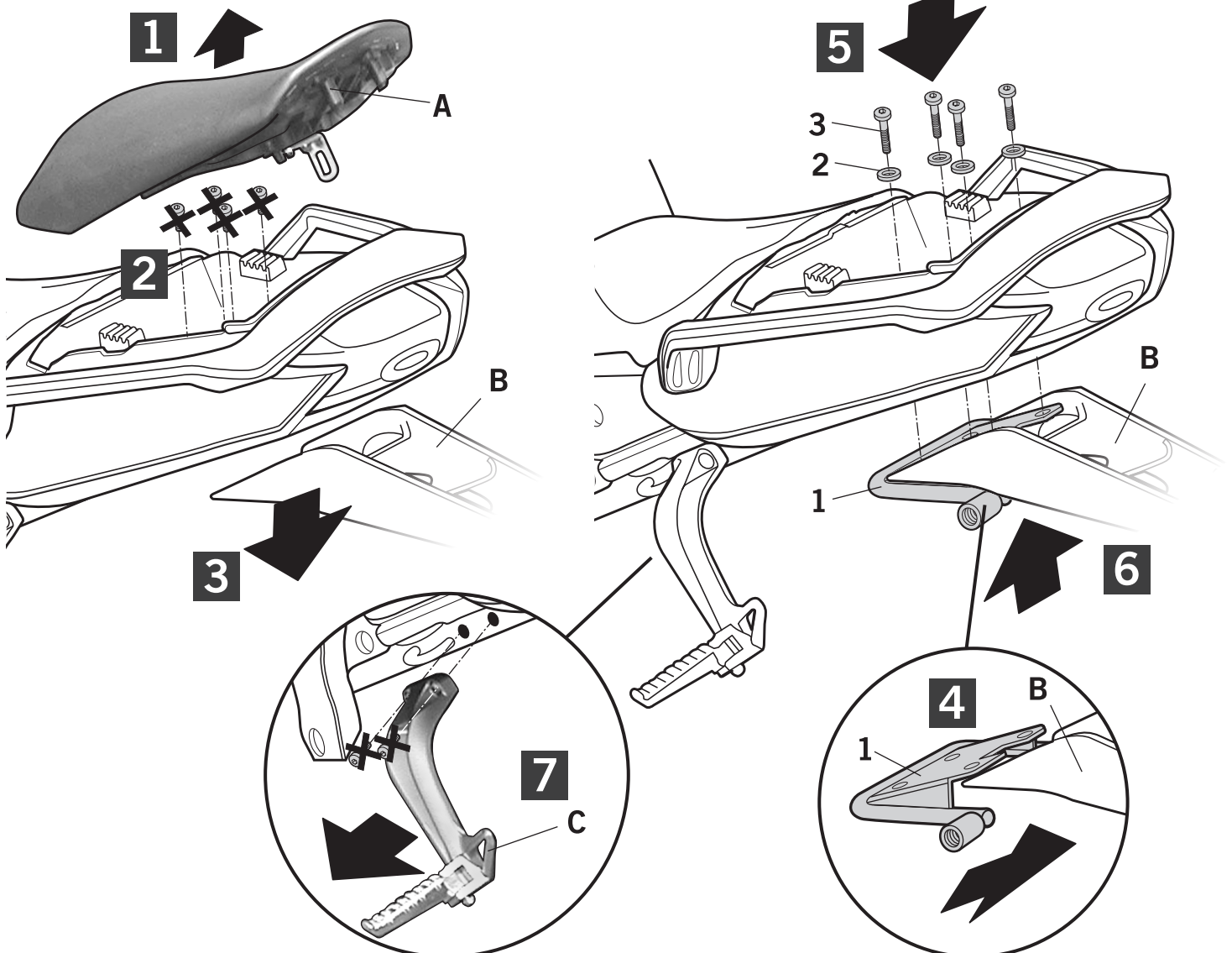
E No apretar los tornillos del todo hasta asegurarse que el KIT está correctamente colocado y alineado.

D Ziehen Sie die Schrauben nicht ganz fest, bevor Sie sich nicht vergewissert haben, daß der Bausatz korrekt eingestellt und ausgerichtet ist.

I Non stringere del tutto le viti fin tanto non si è sicuri che il kit è collocato correttamente e allineato.

F Ne pas serrer les vis avant d'être sûr que le KIT est correctement monté et ajusté.

ATTENTION: For a full equip assembly, mount the 3p system before the top master.



IMPORTANT: Based on European models. For compatibility with models in other continents, check www.shad.es

